

ESOL Skills for Life (QCF)

Entry 1 – Reading

Past paper 7



Time allowed: 45 minutes

Please answer **all** questions. Circle your answers in pen, **not** pencil, **on the separate answer sheet**.
You may **not** use dictionaries. You may **not** use correction fluid.

Task 1

Hi Amina,

How are you? I am happy. I love my town. It's called Greenton.

I live in Field Street. I live next door to Peter and Susie. Peter works at the hospital. The hospital is in Newfield. He is a cleaner. Susie works in a shop. The shop is in Manchester. It's near my college. I buy chocolate there.

Peter and Susie have two children. They are Anna and Jack. The children go to school in Greenton.

I like having dinner with my neighbours. Peter cooks well. Anna helps him. Then I do the washing up with Susie.

Love,

Khadija

Questions 1-3

Choose one letter for each question. Circle the letter of your answer **on your answer sheet**.

1. Where does Khadija live?
 - A Newfield
 - B Greenton
 - C Manchester
2. Who goes to school?
 - A Anna and Jack
 - B Peter and Susie
 - C Khadija and Amina
3. Which sentence is correct?
 - A Khadija doesn't like her town.
 - B Susie does the washing up.
 - C Amina lives next door to Peter.

Questions 4-6

Choose a word from the box to complete the sentences. There is one word you don't need.
Circle the letter of your answer **on your answer sheet**.

- | |
|----------------|
| A <i>Peter</i> |
| B Amina |
| C Khadija |
| D Susie |
| E Anna |

Example: A *is a cleaner.*

4. buys chocolate near her college.
5. cooks with Peter.
6. works in Manchester.

Turn over page

Task 2**Text A**

Bread roll.....20p

Sandwich.....£1.99

Cake.....99p

Biscuits.....65p

Text B**Dose**

Take 1 tablet

Take at meal times

Do not take more than 3 tablets in one day

Text C

Northport Library

Telephone: 01204 289556

Open from 9am-6pm.

You can borrow books
and CDs.

We have computers.

Text D

10.06.15

Hi Dino

We are in Spain.
The weather is hot.
We go swimming
every day.

Antonio



44 Sale Street

Blackpool

FY9 1HD

Text E

Hi Fatima

My birthday
party starts
at 7 o'clock.

See you
later.

Usha

Questions 7-9

Choose the letter of the correct text on page 4 and circle it **on your answer sheet**.

Example: *B* is a label

7. is a price list
 8. is a postcard
 9. is a text message

Questions 10-12

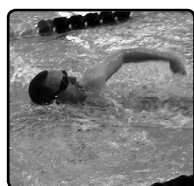
Choose the letter of the correct text on page 4 and circle it **on your answer sheet**.

Example: *C* has the number eight

10. has a date in June
 11. has the number three
 12. has the number seven

Questions 13-15

These words are in the texts. Choose the letter of the correct picture for each word. Circle the letter of your answer **on your answer sheet**.

**A****B****C****D****E**

Example: computer *A*

13. sandwich
 14. cake
 15. books

Turn over page

Task 3

Mayfield Surgery

| Opening hours | |
|-------------------------------|--------------|
| Morning surgery | 8.30-11.30am |
| Afternoon surgery | 2.30-5.30pm |
| Closed Thursdays and weekends | |

| Hours of work | | | | |
|---------------|-----------|-----------|-----------|-----------|
| | Monday | Tuesday | Wednesday | Friday |
| Dr Patel | All day | All day | All day | All day |
| Dr Chan | Morning | Afternoon | Morning | Morning |
| Dr Smith | Afternoon | Afternoon | Day off | Afternoon |

A



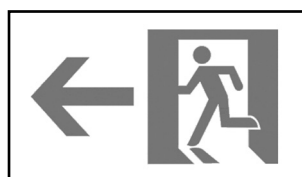
B



C



D



E



F



G



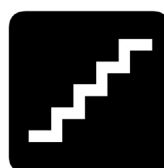
H



I



J



Questions 16-18

Choose one letter for each question. Circle the letter of your answer **on your answer sheet**.

- 16.** The surgery is
 A open every day
 B closed on Friday
 C closed at weekends
- 17.** Dr Chan works in the afternoon on
 A Friday
 B Monday
 C Tuesday
- 18.** You can see Dr Smith on
 A Friday afternoon
 B Monday morning
 C Wednesday morning

Questions 19-24

Match the words to the signs A-J. Circle the letter of the correct sign **on your answer sheet**.

Example: no smoking C

- 19.** appointments
20. Dr Patel
21. reception
22. no mobile phones
23. stairs
24. emergency exit

End of exam

